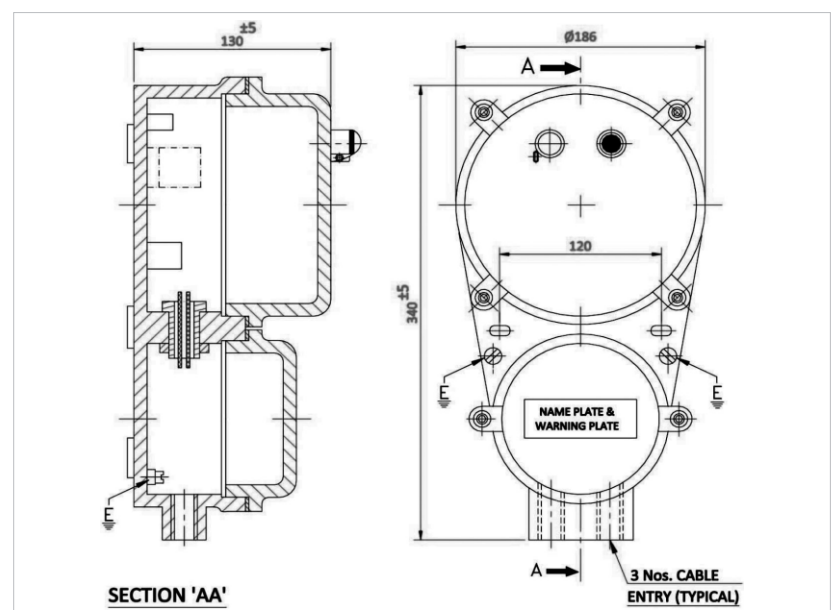


# PATCO FLAME PROOF PRODUCTS

Manufacturer of : Flameproof / Weatherproof, Electrical Equipment, Lighting Fittings, LED Lighting Fittings, Instruments Enclosure & Cable Glands Tested Certified by CIMFR, Dhanbad

## FLP / WP DOL STARTER UPTO 10HP



Catalogue No.	PFP/DOL/08
Type of Ex-Protection	AS PER IS / IEC-60079-1:2007
Zone Classification	Zone 1 & Zone 2
Gas Group	Gas Group I, IIA, IIB
Ingress IP Protection	IP-65 IS / IEC60529-2001
Material of Contraction	Die Cast Aluminum Alloy LM6
Rating	Upto 10 H.P. 220V / 415 Volts AC 50 / 60Hz.
Green Push Button	START with 1 NO Contact element for 10 AMP
Red Push Button	STOP Mushroom Head Pad Lock with 1 NC Contact 10AMP
Terminal	6 Way Clip on Type Rail & Strip Type
Paint	Epoxy Polyester Powder Coating
Earthling	Internal: 01 No. & External: 2 Nos.
Cable Entry	02 Nos. for M20 ( 3/4" ET)
Hardware	Stainless Steel